

Fiber

Photo Sensor

Area Sensor

Ultrasonic Sensors

Inductive Proximity Sensor

Capacitive Proximity Sensor

Timer / Counter

Others

Accessories

◆Characteristic / 特點 :

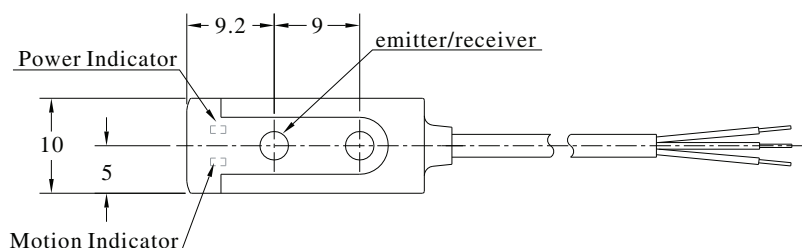
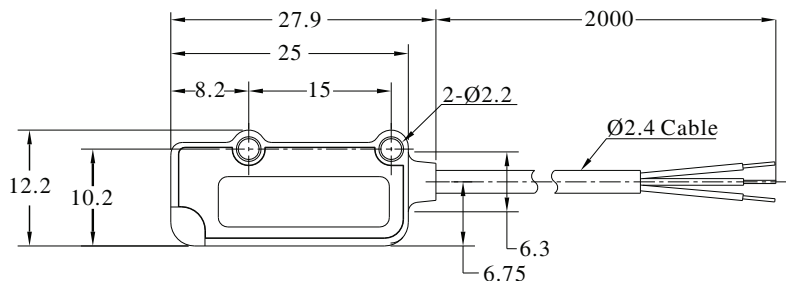
- Small size but with 2M sensing distance, it is very suitable to detect tiny objects.
/ 雖然體積小, 但透過距離可到2M, 使它適合於檢測細小的物體
- Built-in amplifier, supply voltage DC 12 to 24V. To Control output directly.
/ 供應電源12-24V, 內藏放大器, 直接控制輸出。
- Transistor output 100mA.
/ 晶體輸出100mA。



◆Specifications / 規格表 :

Model / 型號	PM6-T50N	PM6-T50P	PM6-2N	PM6-2P
Sensing type / 檢出方式	Through beam / 對照式			
Sensing distance / 檢出距離	50cm		2M	
Emitting light / 發光源	Infrared LED 940nm			
Operating voltage / 工作電壓	DC12 ~24V±10% (Ripple P-P : 10% Max)			
Current Consumption / 消耗電流	30mA Max.		30mA Max.	
Load current / 負載電流	100mA Max. at DC24V			
Output type / 輸出模式	NPN D.on	PNP D.on	NPN D.on	PNP D.on
Protection circuit / 保護電路	Reversed supply circuit protection, short circuit protection output 電源反接保護及輸出短路保護			
Response time / 反應時間	1 ms Max.		1 ms Max.	
Insulation resistance / 隔離阻抗	20MΩ min. (DC500V)			
Voltage withstandability / 絕緣耐壓	AC1000V 60Hz for 60 Sec.			
Operating temperature / 工作時溫度	-10°C ~ +45°C (No freezing allowed不可結霜,結冰)			
Ambient humidity / 工作時溼度	35% ~ 85% RH 相對溼度			
Storage temperature / 儲存時溫度	-10°C ~ +55°C (No freezing allowed不可結霜,結冰)			
Storage humidity / 儲存時溼度	35% ~ 95% RH 相對溼度			
Protection degree / 防水等級	IP64			
Material / 外觀材質	ABS			
Wiring method / 出線方式	Ø2.4 x 2M / 3-wires			
Weight / 重量	Approx.40g			

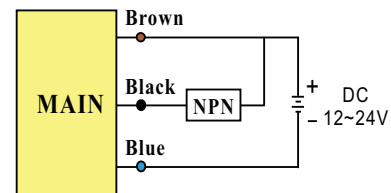
◆Dimensions/尺寸圖 :



◆Wiring diagrams / 接線圖 :

Receiver/ 接收

NPN Type



Emitter/ 發射

