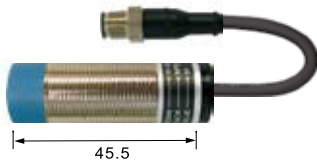
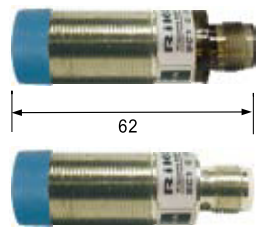


◆ Specifications / 規格表 :

SC1808-□K



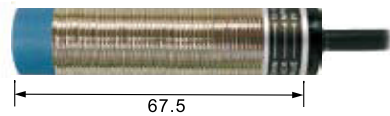
SC1808-□K1/M1



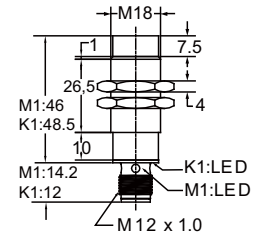
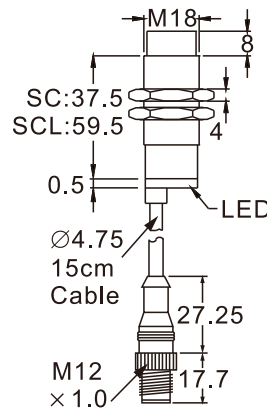
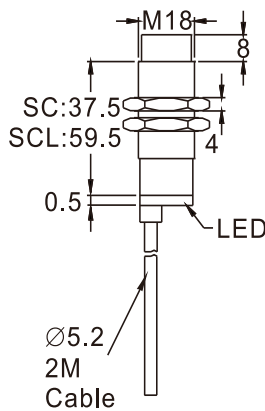
K1
Plastic

M1
Nickel plated brass

SCL1808-□



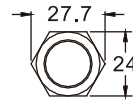
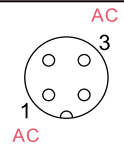
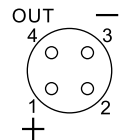
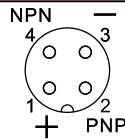
<unit:mm>



-KP2
-KP2K1/M1

-□M1
-□K1/M1

-□A



Output method 輸出模式	NPN N.O.	SC□1808-N	SC□1808-NK	SC1808-NK1/M1
	NPN N.C.	SC□1808-N2	SC□1808-N2K	SC1808-N2K1/M1
	PNP N.O.	SC□1808-P	SC□1808-PK	SC1808-PK1/M1
	PNP N.C.	SC□1808-P2	SC□1808-P2K	SC1808-P2K1/M1
	NPN N.O./N.C. PNP N.O./N.C.	SC1808-KP2	SC1808-KP2K	-
	SCR N.O.	SC1808-A	SC1808-AK	-
	SCR N.C.	SC1808-A2	SC1808-A2K	-

Sensing type / 檢出方式		Unshielded / 非隔離型		
Description / 外型		Standard / 標準M18		
Sensing distance / 檢出距離		8 mm		
Secure sensing distance / 建議距離		0 to 6.4 mm		
Hysteresis / 遲滯		≤ 10 % of sensing distance		
Response time / 反應時間		DC Type 2 ms Max. or AC Type 50ms		
Operating voltage / 工作電壓		DC 12 ~ 24V or AC 90 ~ 260V		
Current consumption / 消耗電流		DC : ≤ 8 mA no-load / AC : 2 mA Max.		
Load current / 負載電流		DC : 100 mA Max at DC 24V or AC : 5 ~ 300 mA Max		
Leakage current / 漏電流		≤ 1.1 mA no-load		
Residual voltage / 殘餘電壓		≤ DC 1.5V		
Insulation resistance / 隔離阻抗		20M Ω min. (DC500V)		
Voltage withstandability / 絕緣耐壓		AC1000V 60Hz for 60 Sec.		
Operating temperature / 工作溫度		-20°C ~ + 60°C		
Protection degree / 防水等級		IP 66		
Wiring method / 出線方式		N/P : Ø5.2x 2M / 3-wires KP2 : Ø5.2x2M / 4-wires AC : Ø5.2x2M / 2-wires	M12 pigtailed type / M12 接頭15cm 電線式	M12 plug-in connector type / M12 接頭
Weight / 重量	SC	Approx. 90g	Approx. 30g	K1:Approx.25g\M1:Approx. 30g
	SCL	Approx. 115g	Approx. 55g	K1:Approx.50g\M1:Approx. 55g